



Future Technology Devices International Ltd.

Application Note AN_100

**Using the FT232R/FT245R with an
External Crystal or Oscillator**

Document Reference No.: FT_000067

Version 1.0

Issue Date: 2008-08-15

This document provides details of the steps required to replace the internal oscillator of the FT232/245R IC with an external clock source.

Future Technology Devices International Limited (FTDI)

373 Scotland Street, Glasgow G5 8QB United Kingdom
Tel.: +44 (0) 141 429 2777 Fax: + 44 (0) 141 429 2758
E-Mail (Support): support1@ftdichip.com Web: <http://www.ftdichip.com>

Table of Contents

1	Introduction.....	2
2	External Oscillator – hardware requirements.....	3
3	External Oscillator – EEPROM modification requirements	4
4	Contact Information.....	6
	Appendix A - List of Figures and Tables	7
	Appendix B – Revision History	8

1 Introduction

The FTDI FT232R and FT245R devices have an integrated clock oscillator to simplify USB designs and reduce component count. In some applications it may be necessary to use an external clock source. For example when operating at a reduced VCC supply voltage or for improved EMC. This document describes how to disable the internal oscillator and enable the external clock source.

2 External Oscillator – Hardware Requirements

With the internal oscillator enabled both the OSCI pin and the OSCO pin are disconnected from the signals internally to the chip and should be left unconnected on the PCB.

Enabling and disabling the internal oscillator is done in the EEPROM as described in Section 3.0. By default a FT232R/245R device is delivered with the internal oscillator enabled.

When using an external crystal a crystal must be connected across the OSCI and OSCO pins.

The crystal frequency must be $12.0\text{MHz} \pm 0.5\%$. An AT-cut crystal is recommended.

Note: The load capacitance (C_L) will be specified on the datasheet of the crystal.

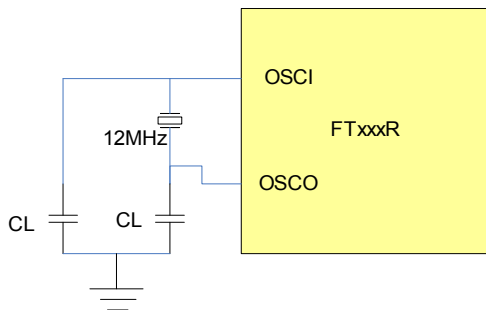


Figure 2.1 Crystal Connection

If using an external oscillator or other clock source then the frequency must also be $12.0\text{MHz} \pm 0.5\%$. It must also drive at +5V CMOS levels or be AC coupled to centre around $+VCC/2$. In this case the source drives the OSCI pin. The OSCO pin is tied to GND.

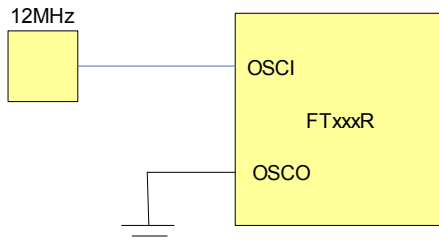


Figure 2.2 Oscillator Connection

3 External Oscillator – EEPROM modification requirements

To disable the internal oscillator the EEPROM must be re-configured. This EEPROM modification cannot be done using the FTDI programming utility, MPROG. The EEPROM can only be re-configured from a custom application.

The sample code below shows how this can be done using a C++ application.

(NOTE: This code is not supported or guaranteed by FTDI).

```
#include <windows.h>
#include <stdio.h>
#include "ftd2xx.h"

int main(int argc, char* argv[])
{
    FT_HANDLE fthandle;
    FT_STATUS status;

    status = FT_Open(0, &fthandle);

    if(status != FT_OK)
        printf("open status not ok %d\n", status);

    FT_PROGRAM_DATA ftData;

    WORD VendorIdBuf = 0x0403;
    WORD ProductIdBuf = 0x6001;
    char ManufacturerBuf[32];
    char ManufacturerIdBuf[16];
    char DescriptionBuf[64];
    char SerialNumberBuf[16];

    ftData.Signature1 = 0x00000000;
    ftData.Signature2 = 0xffffffff;
    ftData.Version = 2; //'0 = 'BM device, 1 = 'C Device, 2 = 'R device

    ftData.VendorId = VendorIdBuf;
    ftData.ProductId = ProductIdBuf;
    ftData.Manufacturer = ManufacturerBuf;
    ftData.ManufacturerId = ManufacturerIdBuf;
    ftData.Description = DescriptionBuf;
    ftData.SerialNumber = SerialNumberBuf;

    ftData.MaxPower = 90;
    ftData.PnP = 1;
    ftData.SelfPowered = 0;
    ftData.RemoteWakeUp = 0;

    //'R features require section below
    ftData.UseExtOsc; // Use External Oscillator
    ftData.HighDriveIOs; // High Drive I/Os
    ftData.EndpointSize; // Endpoint size
    ftData.PullDownEnableR; // non-zero if pull down enabled
    ftData.SerNumEnableR; // non-zero if serial number to be used
    ftData.InvertTXD; // non-zero if invert TXD
    ftData.InvertRXD; // non-zero if invert RXD
    ftData.InvertRTS; // non-zero if invert RTS
    ftData.InvertCTS; // non-zero if invert CTS
    ftData.InvertDTR; // non-zero if invert DTR
    ftData.InvertDSR; // non-zero if invert DSR
    ftData.InvertDCD; // non-zero if invert DCD
    ftData.InvertRI; // non-zero if invert RI
    ftData.Cbus0; // Cbus Mux control
    ftData.Cbus1; // Cbus Mux control
    ftData.Cbus2; // Cbus Mux control
    ftData.Cbus3; // Cbus Mux control
```

```
ftData.Cbus4; // Cbus Mux control
ftData.RIsVCP; // non-zero if using VCP drivers

status = FT_EE_Read(fthandle, &ftData);

if (status != FT_OK)
    printf("EE_Read status not ok %d\n", status);
else
    //It is optional to print out all the parameters.
    {
        printf("Signature1 = 0x%04x\n", ftData.Signature1);
        printf("Signature2 = 0x%04x\n", ftData.Signature2);
        printf("Version = 0x%04x\n", ftData.Version);

        printf("VendorID = 0x%04x\n", ftData.VendorID);
        printf("ProductID = 0x%04x\n", ftData.ProductID);
        printf("Manufacturer = %s\n", ftData.Manufacturer);
        printf("ManufacturerID = %s\n", ftData.ManufacturerID);
        printf("Description = %s\n", ftData.Description);
        printf("SerialNumber = %s\n", ftData.SerialNumber);
        printf("MaxPower = %d\n", ftData.MaxPower);
        printf("PnP = %x\n", ftData.PnP);
        printf("SelfPowered = %x\n", ftData.SelfPowered);
        printf("RemoteWakeup = %x\n", ftData.RemoteWakeup);

        printf("Use Ext Osc = %x\n", ftData.UseExtOsc);
        printf("High Drives = %x\n", ftData.HighDriveIOs);
        printf("Endpoint Size = %x\n", ftData.EndpointSize);
        printf("Pull Down Enabled = %x\n", ftData.PullDownEnableR);
        printf("Serial Number Enabled = %x\n", ftData.SerNumEnableR);
        printf("Invert TXD = %x\n", ftData.InvertTXD);
        printf("Invert RXD = %x\n", ftData.InvertRXD);
        printf("Invert RTS = %x\n", ftData.InvertRTS);
        printf("Invert CTS = %x\n", ftData.InvertCTS);
        printf("Invert DTR = %x\n", ftData.InvertDTR);
        printf("Invert DSR = %x\n", ftData.InvertDSR);
        printf("Invert DCD = %x\n", ftData.InvertDCD);
        printf("Invert RI = %x\n", ftData.InvertRI);
        printf("CBUS0 = %x\n", ftData.Cbus0);
        printf("CBUS1 = %x\n", ftData.Cbus1);
        printf("CBUS2 = %x\n", ftData.Cbus2);
        printf("CBUS3 = %x\n", ftData.Cbus3);
        printf("CBUS4 = %x\n", ftData.Cbus4);
        printf("RIsVCP = %x\n", ftData.RIsVCP);
    }

//use external clock.

ftData.UseExtOsc = 1; //Enabling use of external oscillator

status = FT_EE_Program(fthandle, &ftData);
status = FT_Close(fthandle);

if (status != FT_OK)
    printf("EE_Program status not ok %d\n", status);
else
    printf("EE_Program status ok %d\n", status);

return 0;
}
```

CAUTION: IF THE INTERNAL OSCILLATOR IS DISABLED IN THE EEPROM, THE DEVICE WILL NOT FUNCTION UNTIL AN EXTERNAL CLOCK SOURCE IS APPLIED.

THIS EXTERNAL CLOCK SOURCE WILL BE NECESSARY IF THE APPLICATION NEEDS TO RE-ENABLE THE INTERNAL CLOCK SOURCE.

4 Contact Information

Head Office – Glasgow, UK

Future Technology Devices International Limited
373 Scotland Street
Glasgow G5 8QB
United Kingdom
Tel: +44 (0) 141 429 2777
Fax: +44 (0) 141 429 2758

E-mail (Sales) vinculum.sales@ftdichip.com
E-mail (Support) vinculum.support@ftdichip.com
E-mail (General Enquiries) admin1@ftdichip.com
Web Site URL <http://www.ftdichip.com>
Web Shop URL <http://www.dftdichip.com>

Branch Office – Taipei, Taiwan

Future Technology Devices International Limited (Taiwan)
4F, No 18-3, Sec. 6 Mincyuan East Road
Neihu District
Taipei 114
Taiwan, R.O.C.
Tel: +886 (0) 2 8791 3570
Fax: +886 (0) 2 8791 3576

E-mail (Sales) tw.sales1@ftdichip.com
E-mail (Support) tw.support1@ftdichip.com
E-mail (General Enquiries) tw.admin1@ftdichip.com
Web Site URL <http://www.ftdichip.com>

Branch Office – Hillsboro, Oregon, USA

Future Technology Devices International Limited (USA)
7235 NW Evergreen Parkway, Suite 600
Hillsboro, OR 97123-5803
USA
Tel: +1 (503) 547 0988
Fax: +1 (503) 547 0987

E-Mail (Sales) us.sales@ftdichip.com
E-Mail (Support) us.admin@ftdichip.com
Web Site URL <http://www.ftdichip.com>

Distributor and Sales Representatives

Please visit the Sales Network page of the FTDI Web site for the contact details of our distributor(s) and sales representative(s) in your country.

Neither the whole nor any part of the information contained in, or the product described in this manual, may be adapted or reproduced in any material or electronic form without the prior written consent of the copyright holder. This product and its documentation are supplied on an as-is basis and no warranty as to their suitability for any particular purpose is either made or implied. Future Technology Devices International Ltd will not accept any claim for damages howsoever arising as a result of use or failure of this product. Your statutory rights are not affected. This product or any variant of it is not intended for use in any medical appliance, device or system in which the failure of the product might reasonably be expected to result in personal injury. This document provides preliminary information that may be subject to change without notice. No freedom to use patents or other intellectual property rights is implied by the publication of this document. Future Technology Devices International Ltd, 373 Scotland Street, Glasgow G5 8QB United Kingdom. Scotland Registered Number: SC136640

Appendix A - List of Figures and Tables

List of Figures

Figure 2.1 Crystal Connection	3
Figure 2.2 Oscillator Connection	3



Appendix B – Revision History

Version 1.00 First Release

19/08/2008